

# DEVELOP SKILLED WRITERS FOR **IMPROVED STUDENT** **ACHIEVEMENT IN** STANDARDIZED TESTS

An online writing program that **reduces complexity, saves educators time, and makes differentiated instruction achievable in every classroom**



# OBSTACLES TO TEACHING WRITING TO STUDENTS

Writing is a complex skill and doesn't develop naturally, and thus it requires students to receive adequate practice and instruction in writing.



The National Assessment of Educational Progress (NAEP) reports that **76%** of students are not proficient with basic writing

## Some of the most common challenges to teaching writing include:

- > Students in a typical class don't write frequently
- > Teachers aren't able to devote enough time to writing and writing instruction
- > Explicitly identifying and meeting the needs of individual students
- > Lack of student motivation
- > Access to quality teaching materials and resources



# ABOUT LUMOS StepUp WRITING PROGRAM

Lumos Learning is on a mission to **transform K-12 students' writing skills** with a robust state-of-the-art writing program designed to prepare them to excel in the high-stakes state assessments.



Enhance writing skills with standards-aligned assignments of different writing genres and prompts



Support students on writing skills that need attention powered by actionable feedback



Focus on your writing instruction while saving time on prep and feedback



Improve students' writing proficiency levels with AI-powered automated interventions



Implement a standardized, flexible and self-paced learning platform for students

Armed with **actionable insights**,  
deliver **targeted writing instruction**  
to drive **meaningful growth**



Empower students to learn at their own pace



Make data-informed decisions



Save time on growth monitoring, calibration, and instructional planning



Provide rapid feedback for revisions



Identify and address foundational writing skill gaps



Drive student engagement and motivation



Eliminate the need for multiple redundant diagnostic tests



Facilitate guided practice or personalized help for students



Support students in building critical thinking skills



Extend learning beyond the classroom

# WHAT MAKES STEPUP WRITING PROGRAM DIFFERENT?



# PROGRAM FEATURES

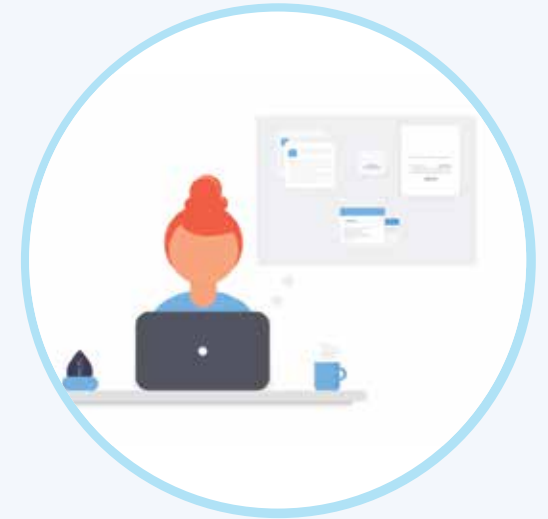
## Write Metrics

For teachers, the hardest part of planning is meeting each student's needs. With the push for differentiated instruction paired with the size of classes and the curriculum's demands, it can be an overwhelming task. On top of the amount of grading teachers have to complete, especially concerning writing, it can be challenging to track individual student needs.

**Lumos Write Metrics is an innovative writing analyzer designed to help educators understand common errors in student written responses and track improvements throughout the school year.** It efficiently identifies and aggregates grammatical and spelling mistakes in student answers. It also has a robust algorithm that assigns a readability rating for each response. The readability and grade-level are measured based on Flesch-Kincaid scores.

### Using Write Metrics, you can:

- ✓ Diagnose and assess each students' writing level
- ✓ Easily identify common spelling and grammatical errors
- ✓ Focus attention on struggling writers who need extra help
- ✓ Monitor and manage students' performance over time
- ✓ Targeted writing remediation



## Intuitive Dashboard, Reports, and Analytics

Get instant access to in-depth student reports (collective and individual) across standards, domains, lessons, and more: view, download, and print reports related to student scores and activity data.

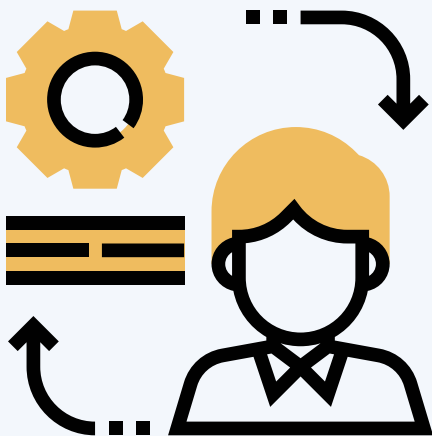
Whether you **measure student-level, classroom-level, school-level, or district-level performance**, our reports provide valuable insights necessary to drive school improvement initiatives.



## Remedial and Deep Remedial Additional Practice Modes

Every child learns at a different pace, which makes creating lesson timelines incredibly difficult for teachers. The Remedial and Deep Remedial assignment feature in the StepUp Teacher Portal can **help students move at their own pace, get remediation for standards they need extra support in, and breeze through sections they have already mastered.**

Turning on these modes can automatically assign additional practice lessons to students based upon their performance on the assignment. It's especially helpful to test students on an exact language standard, analyze their proficiency, and provide additional support.



## Self-Paced Guided Practice via Lumos Assistant

If you're looking for ways to aid students in learning autonomously after classroom sessions, Guided Practice in StepUp writing program can help you achieve that.

The Lumos Guided Practice in the student portal is an intelligent AI-powered conversational system. **It helps your students practice critical standards in English Language Arts (ELA) in an empathetic environment that nurtures every student irrespective of their current proficiency level.**

Like a teacher, it carefully learns from the students' proficiency data and drastically simplifies the users' experience. It also offers lessons that are precisely tailored to the student's unique needs and provides interactive voice and visual aid to motivate and engage learners.





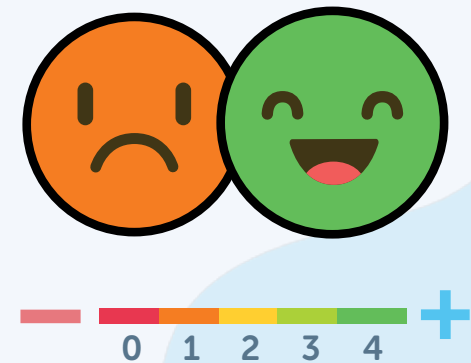
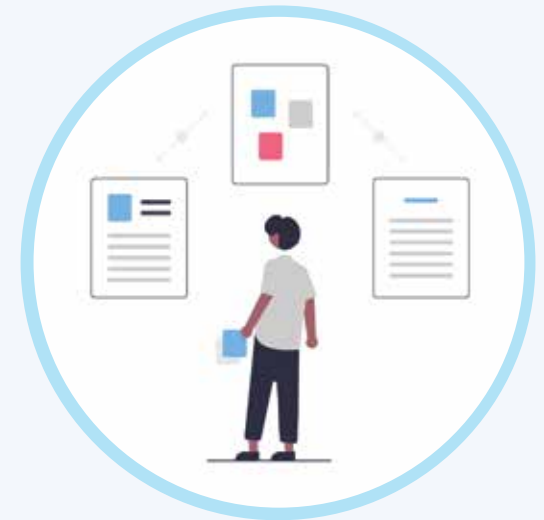
## Lumos Grading Assistant

Grading an open-ended question based on the rubrics is a rather time-consuming job for teachers.

The Lumos Grading assistant is an innovative tool that provides instant grading to students' constructed responses automatically using machine learning and artificial intelligence.

The algorithm provides a directional score on a scale of 0 to 4. It takes several attributes of a student's response, including grammar errors, spelling errors, proximity to the expected answer, etc.

The automated grading system increases the effectiveness and quality of feedback to students while you still stay in control.



## Lumos EdSearch

Imagine getting back countless hours spent searching for quality study materials to help students learn effectively! No more endless scrolling through page after page in Google or your favorite search engine to find learning resources or practice materials.

Lumos EdSearch is a premier online educational search tool designed to help educators quickly find standards-aligned resources, create and share lesson plans and assignments, whether for standardized testing or extended learning, at any grade level.



### Using EdSearch, you can

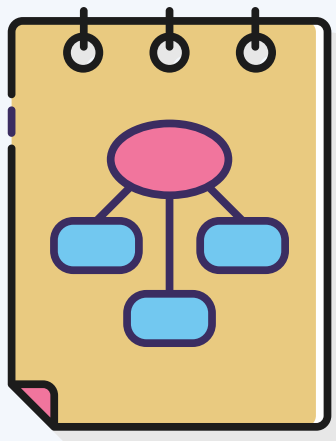
- Discover thousands of curated standards-aligned study resources
- Offer safe search to students
- Get ready access to a multitude of grade-appropriate resources including, reading passages, vocabulary practice aids, engaging videos, apps, worksheets, interactive quizzes, sample questions, etc.
- Create and assign personalized resource kits to your students to improve writing proficiency, reading comprehension, vocabulary skills and more

## Lumos Assistant

The Lumos Assistant is a digital assistant system similar to Siri or Alexa but specifically built to support students in K-12. It combines conversational bot technology with Machine Learning and student activity data to make highly personalized recommendations for each student.

### Some of the key capabilities include:

- ✓ Quick and effortless access to priority assignments
- ✓ Alerts about pending & completed assignments
- ✓ Motivates students to progress and improve
- ✓ Provides optimal content to fit their needs best



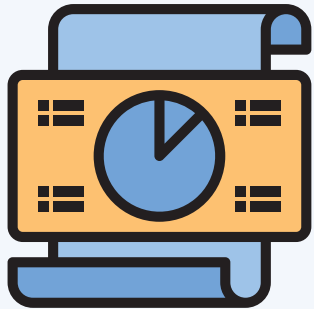
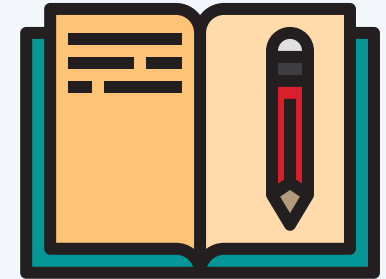
## Mind Mapping

Encourage students to use the Mind Map tool, which provides a clean interface for students to generate and connect thoughts while attempting to write essays or any extended responses during assignments.

It allows students to draw out any ideas and thoughts that come to mind, then organize them to plot out storylines, character relationships, and more. For teachers and students, mind mapping offers a fundamentally different way to work with information.

## An Exhaustive Collection of Assignments

The program supports an **extensive collection of writing assignments of different genres and prompts** (i.e., narrative, informative and argumentative) - offered in multiple formats. Further, you can create your custom assignments in whatever format you choose



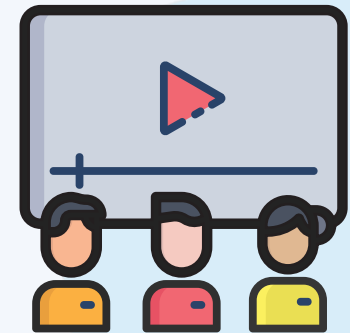
## Benchmarking Tests

Assign benchmarking assignments with standards-aligned questions for writing. Students can practice the new item types and get access to detailed diagnostic reports. **It's ideal for diagnosing student learning difficulties, intervention, remedial programs, and standardized test preparation.**

## Smartboard Practice Mode

It enables you to share and display assignments to the students in the class for real-time student progress and performance tracking. The Smartboard practice tool offers many different opportunities for teachers, such as easy customization of activities, increased information about student understanding, and collaboration opportunities.

**Use Smartboard mode to provide individualized feedback and improve the students' engagement during writing instructional sessions.**





### Download reports in multiple formats

Export the performance reports in CSV or PDF

### Developed by Educators

Designed and prepared by experts and highly experienced teachers

### Ongoing support with a single point of contact

Hassle-free consistent support experience from the initial call to resolution

### Quick and easy setup

Supports single sign-on (SSO) through integration with Google and Clever or uploading a classroom roster.

### Free product training support

Comprehensive product training for teachers and admin

### Access to free resources

Administrator and Teacher accounts are forever free

### Data Security and Privacy

Complies with COPPA and FERPA guidelines

### Collaborative Learning Platform

Personalized interfaces for educators, administrators, students and parents



# ABOUT LUMOS LEARNING

At Lumos, we offer engaging learning programs to improve student achievement on state assessments. The Lumos StepUp program offers realistic assessment rehearsal along with path-breaking AI-powered remedial practice.

We pride in our ability to create custom solutions specifically designed to meet individual school districts' needs. Using our standards-aligned learning programs, educators can help students succeed in high-stakes assessments and significantly improve school rankings.

**Our track record speaks for itself - the program is used by over**



26,000+ Schools



53,000+ Teachers



368,000+ Students

## Mission Statement

At Lumos Learning, **we believe in being there when a student needs that extra help** - as a teacher, as a parent. So, we are working diligently to build an empathetic learning platform that nurtures student achievement.

# EDUCATOR'S LOVE STEPUP



————— **Lisa Jones, Academic Coach** —————

"I use this resource to prepare students for standardized assessments. I love the language and structure aligned to the state standards, so when done in small or whole groups, it provided a realistic picture of what students will see on the real assessments. I also love the option to display text from a computer; this is great for online assessment practice."



————— **Antoinette M., Teacher** —————

"Excellent! My students and I Love doing this online. The feedback, SmartBoard activity, progress, and diagnostics are AMAZING!"




————— **Kristoffer Brogna Principal at Woodmere School** —————

"We choose Lumos because of the content for the state assessment. It is the closest thing to real-life state assessment questions, which makes the students better prepared. Our teachers believe in the Lumos product, and we are delighted as a school. Thanks Lumos!"



————— **Cara Maloney, Teacher** —————

"An attractive quality of this program is that the teacher can use it a variety of ways: homework, pre /post assessment, independent practice during station time!!! I love the online workbooks, videos, and apps as well! What a fantastic bonus! As a teacher, I would recommend it!"



The Lumos StepUp  
Writing Program is  
**ready for schools  
of all sizes to  
help you prepare  
students to excel in  
standardized tests.**

**REGISTER FOR A  
FREE TRIAL  
ACCOUNT TODAY!**



888-309-8227



Support@lumoslearning.com



[www.lumoslearning.com/a/writingprogram](http://www.lumoslearning.com/a/writingprogram)